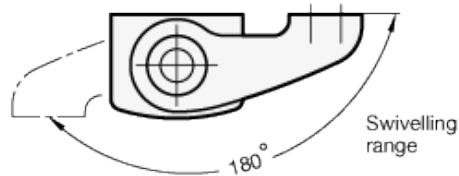
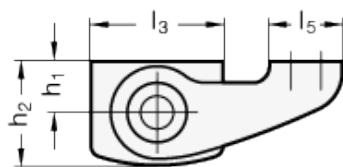
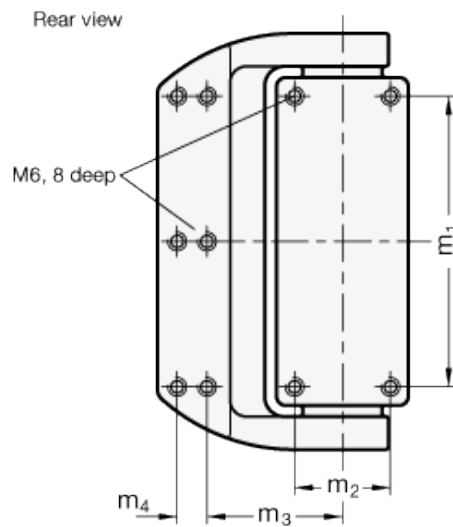
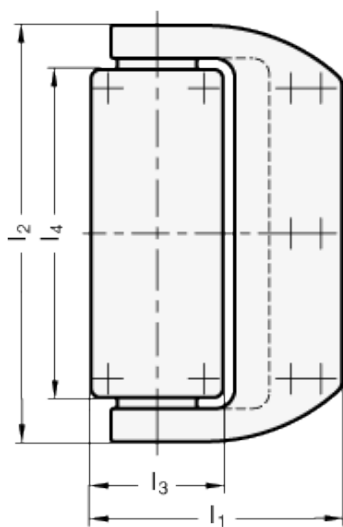


GN 139.6

Hinge



INOX
Stainless Steel



technical informations

Specification

Stainless Steel precision casting

- AISI 316L

- polished, Ra < 0.8µm

Pin

Stainless Steel AISI 316L

Information

With the exception of the connector plug, the hinge without safety switch GN 139.6 do not differ in their external appearance from hinges with safety switch GN 139.5. With the concealed screw connection at the back, the hinge is also tamper-proof.

The compact design combines safety and attractive appearance.

The design with broad hinge halves is intended for mounting to glass or polycarbonate doors

On request

- Hinges with operating angle > 0°
- Hinges with other contact loadings

Standard Elements	Main dimensions											Weight
Description	l ₁	l ₂	l ₃	l ₄	l ₅	h ₁	h ₂	m ₁	m ₂	m ₃	m ₄	g
GN 139.6-76-126	76	126	40	99.4	22	15.5	31.5	88	29	41	9	-



STANDARD MACHINE ELEMENTS WORLDWIDE