

Gates®

TANALS

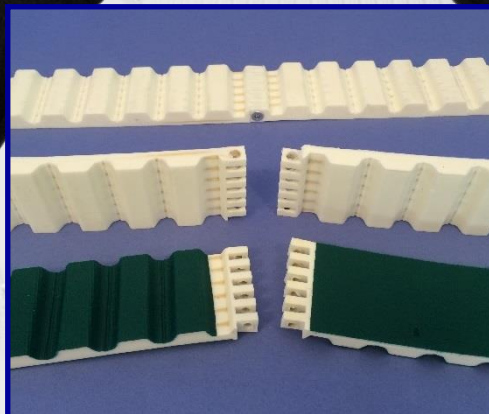
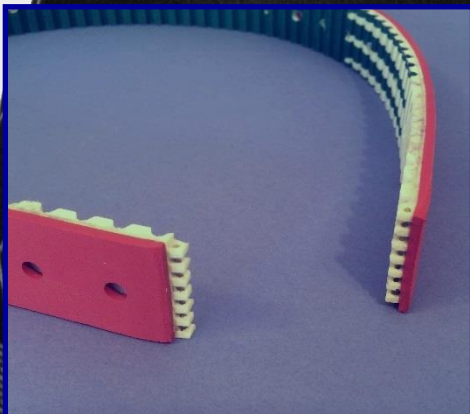


## ERO Joint® HP belt

One Hinge Pin for High Power

As strong as a welded belt

ERO JOINT



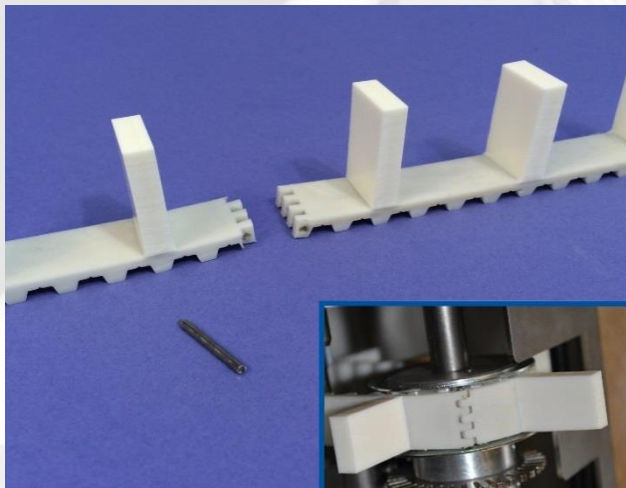
## Polyurethane Timing Belts ERO Joint® HP (Hinge Pin) as strong as a welded joint (Patented)

**Fast** and **Easy** assembly. ERO Joint® HP belts are available with all types of coating and all types of guiding or machining.  
Mechanical strength and lifetime are greater than any other mechanical fastening systems.

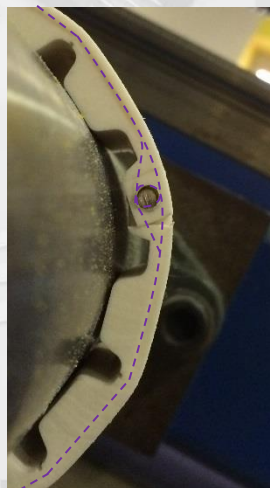
Pitch available: H, T10, AT10, T20, AT20, 8M, 14M  
Standard fabrication: Polyurethane 90 shore A light grey  
Cables: One polymer cable around the pin in each hinge teeth. Each cable is parallel to each other  
Width: Every width from 10 to 450mm (standard fabrication of junction plates is 150mm)

Pitch	8M	T10	AT10	H	14M	T20	AT20
Min. pulley diameter (mm)	51	44	47	56	124	95	115
Min. back bend diameter (mm)	120	80	120	79	200	120	180
Allowable tension force (N/25mm)	1871	1170	1871	970	2578	1871	2930

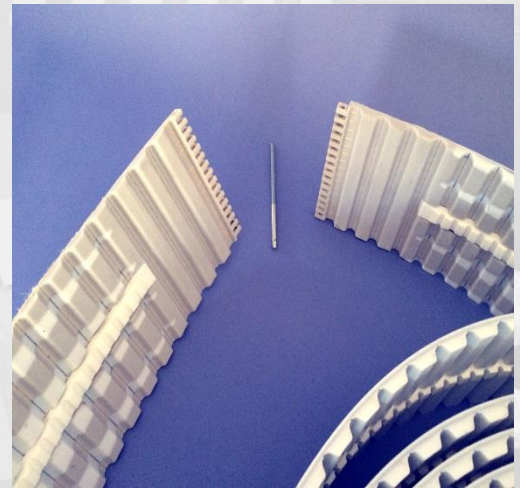
The allowable tension force on the ERO Joint® HP is the same as the standard welded belt with steel cables



16 T10 350 with cleats

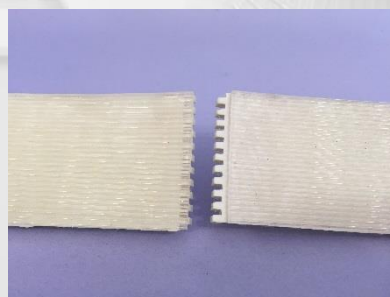
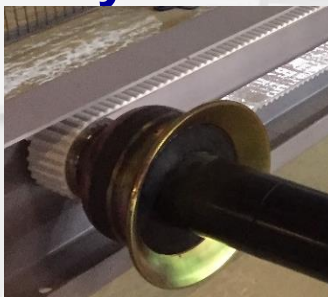


Cables symbolized dotted



Guiding and standards machining available on all pitches

## Polyurethane Flat Belts ERO Joint® HP



Use now the power, fast and easy assembly of the ERO Joint® HP solution, for your flat belts system.  
Reversed Timing Belt with Hinge Joint 1 axis, covered by PU ribs.  
Contact us for more information.

## Assembly Tool ERO Joint® HP

For systems without tensioning device, we can propose a tensioning tool.



All ERO Joint® solutions at our website: [www.ero-joint.com](http://www.ero-joint.com)