

## Hinges

Zinc die casting

### SPECIFICATION

#### Type

- Type **A**: 2x2 bores for countersunk screws

Zinc die casting **ZD**

plastic coated

black, RAL 9005, textured finish **SW**

silver, RAL 9006, textured finish **SR**

Cover cap

Plastic (Polyacetal POM)

temperature resistant up to 80 °C



### INFORMATION

GN 437.1 Hinges of zinc die casting fit perfectly into a wide range of environments thanks to their timeless design.

Moreover, they are matched with the GN 437 (see page 1427) functional hinge family as complementary hinges.

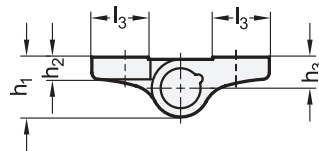
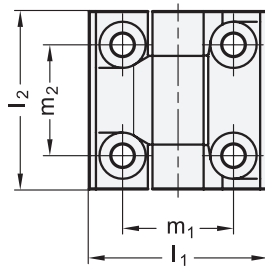
### TECHNICAL INFORMATION

- Plastic characteristics (see page A2)

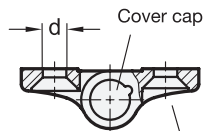
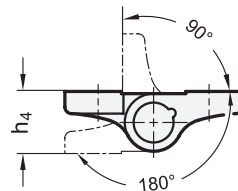
### ACCESSORY

- Stainless Steel-Spacer plates GN 2370 (see page 1392)

- Stainless Steel-Plates with tapped holes GN 2372 (see page 1393)



#### Swivelling range



Bores for countersunk screw  
DIN 7991

### GN 437.1

Description	l1	l2	d	h1	h2	h3	h4	l3	m1	m2	△
GN 437.1-ZD-60-60-A-SR	60	60	8.3	18.5	7.5	9.5	19	20	36	36	140
GN 437.1-ZD-60-60-A-SW	60	60	8.3	18.5	7.5	9.5	19	20	36	36	140

