

TSUBAKI **TITAN CHAIN**

FOR IMPROVED WEAR LIFE IN SEVERE APPLICATIONS



MADE IN JAPAN

Located in Kansai Science City, the Kyotanabe plant embodies our wide spectrum of cutting-edge technological solutions. Our aim is to develop this environmentally friendly facility into the world's number one chain plant. Furthermore, Kyotanabe's Technical Centre plays a vital role within the Tsubaki Group through its R&D activities and distribution of knowledge.

The Kyotanabe plant is an excellent example of a facility built on the foundation of Tsubaki's technical expertise.

Consideration for the Global Environment

The Tsubaki Group is working to conserve the environment and reduce the environmental impact of its operations by improving the efficiency of its manufacturing activities.

In addition, the Tsubaki Group is advancing the development of environmentally friendly products.

These eco-products help customers reduce energy consumption and improve the economic aspects of their operations.

The Tsubaki Eco Link logo is used only on products that satisfy the standards for environmental friendliness set by the Tsubaki Group.



OUR LATEST INNOVATION

TSUBAKI Titan chain is the latest innovation from Tsubaki's research & development with the goal to increase wear life severe applications for example in high speed applications and/or abrasive and dusty conditions.

Our TSUBAKI Titan chain combines the best features of our standard GT4 Winner chain with new and unique specifications, delivering the ultimate in wear performance.

MAIN FEATURES:

Seamless Bushes with Lube Grooves

Tsubaki LG (Lube Groove) seamless bushes are precision components and perfectly cylindrical. The special Lube Grooves hold oil at the point of contact, where the chain needs it most. This limits the wear between pin and bush, significantly improving the wear life as a result.

Special Coated Pins

Special coated pins provide an extra hard and low friction surface, thus increasing wear life. As a result, maintenance costs, downtime and the Total Cost of Ownership are reduced to a minimum.

Corrosion Resistance

Nickel plated outer link plates combined with black oxide inner link plates provide an extra layer of protection against corrosion.

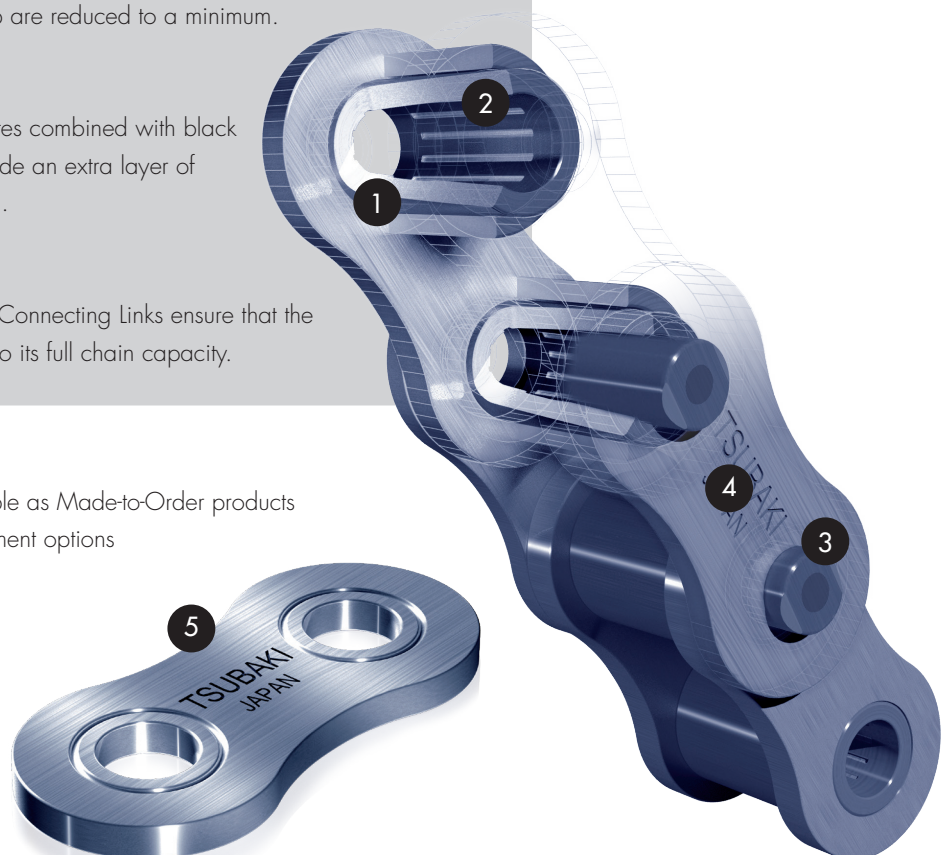
Ring Coin

Tsubaki's unique Ring Coin Connecting Links ensure that the chain can be specified up to its full chain capacity.

- 1 Seamless Bush
- 2 Lube Grooves
- 3 Special Coated Pin
- 4 Nickel Plated Outer Link Plates
- 5 Ring Coin

Note

- Additional sizes available as Made-to-Order products
- Multi-strand and attachment options available upon request

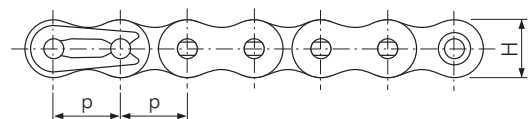
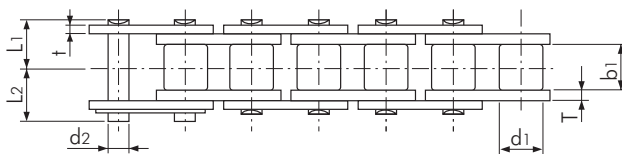


TSUBAKI TITAN CHAIN FOR IMPROVED WEAR LIFE IN SEVERE APPLICATIONS

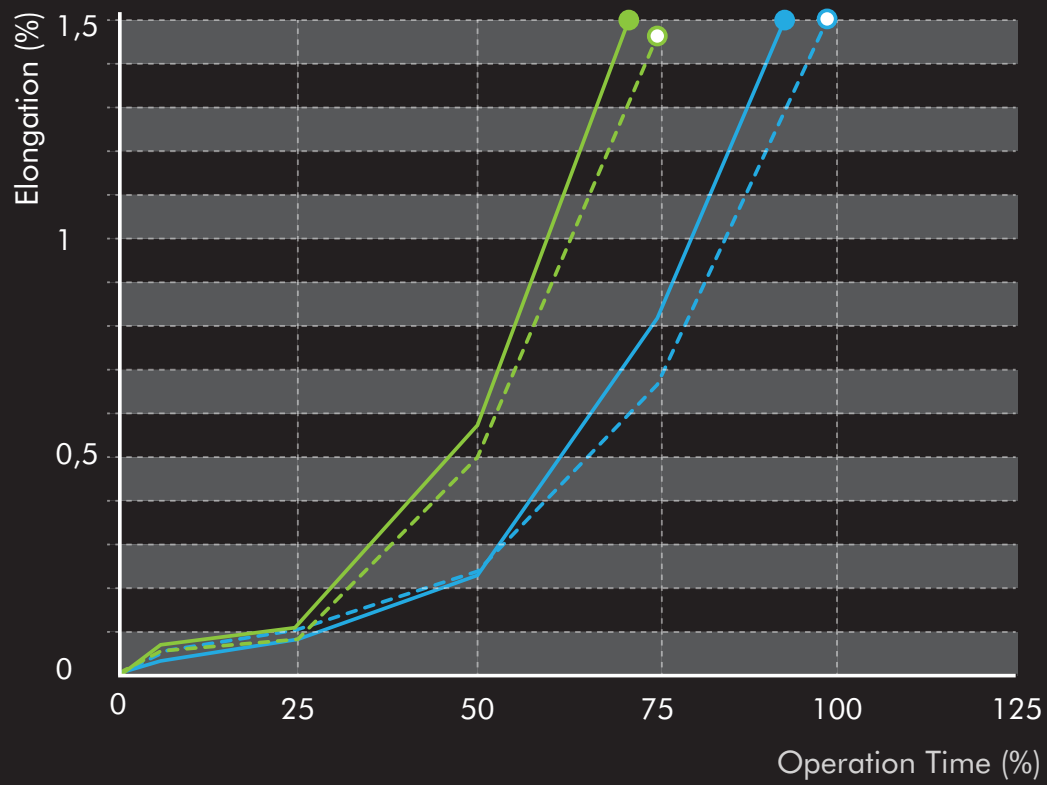


TECHNICAL FEATURES:

Tsubaki Chain No.	Standard	Pitch	H	d1	b1
RS12B-1	BS/DIN	19.05	16.10	12.07	11.68
RS16B-1	BS/DIN	25.40	21.00	17.02	8.28
RS20B-1	BS/DIN	31.75	26.00	19.56	10.19



WEAR TEST RESULTS IN ABRASIVE CONDITIONS



- Competitor High Resistance Chain: left
- Competitor High Resistance Chain: right

- TSUBAKI Titan Chain: left
- TSUBAKI Titan Chain: right



Tsubakimoto Europe B.V.

Aventurijn 1200
3316 LB Dordrecht
The Netherlands

Phone: +31 (0)78 620 4000
Fax: +31 (0)78 620 4001
E-mail: info@tsubaki.eu
Internet: tsubaki.eu

Tsubakimoto UK Ltd.

Osier Drive, Sherwood Park
Annesley, Nottingham NG15 0DX
United Kingdom

Phone: +44 (0)1623 68 87 00
Fax: +44 (0)1623 68 87 89
E-mail: sales@tsubaki.co.uk
Internet: tsubaki.eu

Tsubaki Deutschland GmbH

Münchner Straße 135
D-85774, Unterföhring
Germany

Phone: +49 (0)89 2000 13380

E-mail: antriebstechnik@tsubaki.de
Internet: tsubaki.de

Tsubaki Ibérica S.L.

Calle de Juan de la Cierva 28
28823 Coslada, Madrid
Spain

Phone: +34 911 873 450
Fax: +34 911 873 451
E-mail: info@tsubaki.es
Internet: tsubaki.es